

Grand Beach Realty Inc.

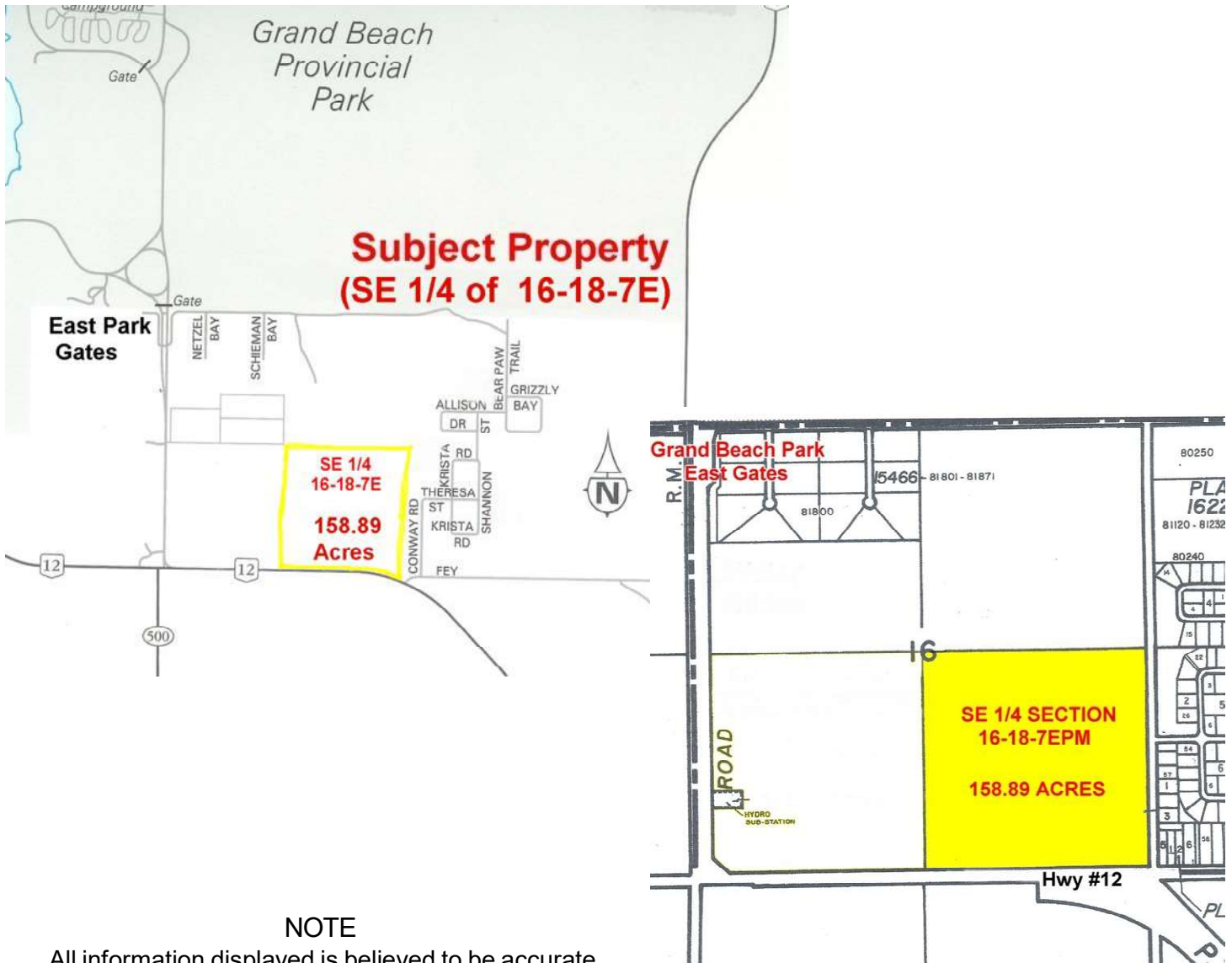
Welcomes you to this 158.89 Acres along Hwy 12, Bear Paw Estates, Grand Beach



Asking \$199,000

- 158.89 acres of virgin forest
- Part of SE 1/4 of Sec 16 -18- 7epm (RM of Alexander, Mb)
- Many varieties of mature trees
- Located along Hwy #12 and Bear Paw Estates
- Property has been Zoned: Residential
- An excellent location close to Grand Beach
- Taxes 2022: approx. \$835.37
- Quick Possession is available
- Located along Hwy 12 next to Bear Paw Estates, Mb.
- Grand Beach is only about 5 min east of property

**Street & Site Plan Map of
158.89 acres , (SE 1/4 of 16-18-7E), Grand Beach, Mb.**



NOTE

All information displayed is believed to be accurate but is not guaranteed and should be independently verified. No warranties or representations are made of any kind

Presented By:

Larry Guarino

YOUR LOCAL EXPERIENCED PROFESSIONAL

“Over 34 years of Real Estate Experience”

Larry: (204) 771-5531 (Cell)

Office: (204) 754-3096 (Office)

E-mail: office@grandbeachrealty.ca