

WORKSHOP INFORMATION AND LAYOUT



BUILDING

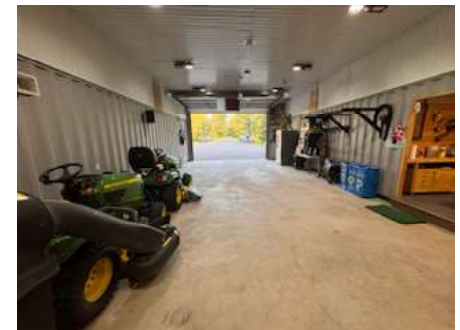
- Two sea containers 8' x 40'
- 13ft ceilings in work shop
- Shop size approx. 1,440 sq ft (36' x 40')
- 16' x 10 insulated overhead door
- Floor area: 20' x 40'
- Men Cave sitting area
- Area in Workshop finished with facial panelling on ceilings and partially walls.
- Men Cave sitting area has facial panelling ceilings \$ Walls with 1"x 6" tongue and groove pine
- Heated Floors
- Sea containers are insulated w/2" SM R20 insulation
- The garage door is 16' wide x 10' high
- Metal Roof
- Lot size for Workshop Garage is approx 2.06 Acres
- Windows PVC triple pane glass
- Sea containers mounted on concrete blocks 24 x 24 and steel I-beams
- Outside finished siding to match house

ELECTRICAL

- 70 amp electrical panel
- All LED lighting
- 5 KW boiler for floor heating
- Motion sensor entry lights on
- Alarm system, open door sensors, smoke detector, shop entry alarm digital pad.
- CCTV cameras, inside and outside of workshop

CARPORIT BACK OF SHOP

- Size: 27' x 14'
- Three side walls finished with privacy lattice
- 6 x 6 supporting treated Wood
- All LED lighting
- Walk around motion sensor lights.



NOTE

All information displayed is believed to be accurate but is not guaranteed and should be independently verified. No warranties or representations are made of any kind