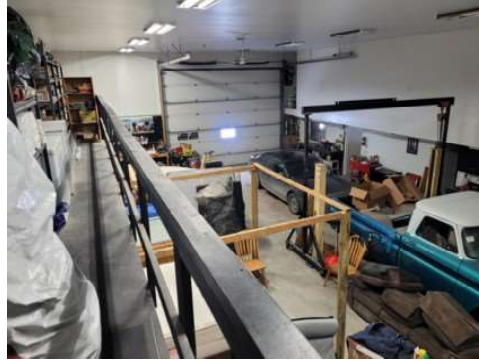


WORKSHOP INFORMATION



Office

- High ceiling in work shop
- Shop size approx. 1,716 sq ft (52' 4" x 33' 6") with infloor heating
- The garage door is 18' wide x 14' high
- Plus: Screened Room around the workshop
- Shed outbuilding (16' x 12')
- Exterior plugs - five
- RV Plugs: 30 amp 120 volt & 50 amp 240 volt
- Exterior lights - LED's
- Driveway circular with lighting
- Garden area - fenced and gated
- In-floor shop heating with 27 KW boiler
- Heat Pump on main 36000 BTU (3 ton) heat & A/C
- Main Floor shop area: Office area, Kitchen with fridge & stove, Mechanical Room, 4 piece bath, 2 storage rooms
- Workshop has 3 benches and cupboards, Overhead lighting and T-5 fixtures, Mezzanine storage area.
- Vehicle Lift - 12,000 LB with 4 posts
- Floor drain to 500 gallon exterior tank
- 400 amp electrical panel with other Subpanels
- Two - 200 amp panels & One - 100 amp panel
- 40 Gallon HWT
- Stairwell chair lift



Lunch Room